

# FARRINGDON PARISH COUNCIL

Parish Clerk: Mrs Claire Gibbs

Tel: 07765 129409

Email: [clerk@farringdonpc.org](mailto:clerk@farringdonpc.org)

## Members of the Parish Council - Planning Committee

Cllr Batley (Vice-Chair)  
Cllr Elderton (Chair)  
Cllr Newens

Cllr Bevan  
Cllr Mrs Farris  
Cllr Williams

Cllr Durrant  
Cllr Ms de Ledesma

You are hereby summoned to attend a meeting of Farringdon Parish Council Planning Committee to be held in the Function Room, The Golden Pheasant, Gosport Road, Farringdon, GU34 3DJ, on Wednesday, 13<sup>th</sup> December 2017, commencing at 2pm.

*C. Gibbs*

Mrs Claire Gibbs, Parish Clerk

Members of the public are very welcome to attend, but may only speak at the invitation of the Chair

## AGENDA

281/17 TO RECEIVE AND APPROVE APOLOGIES FOR ABSENCE

282/17 TO RECEIVE AND APPROVE DISCLOSABLE PECUNIARY INTERESTS AND NON PECUNIARY INTERESTS

283/17 TO APPROVE DISPENSATIONS FOR DISCLOSABLE PECUNIARY INTERESTS UNDER SECTION 33 OF THE LOCALISM ACT 2011

284/17 TO RECEIVE RESOLUTION TO SUSPEND STANDING ORDERS TO ALLOW PUBLIC QUESTION TIME

### PUBLIC QUESTION TIME

285/17 TO RECEIVE RESOLUTION TO RESUME STANDING ORDERS

286/17 PLANNING APPLICATIONS

**Application:** SDNP/17/05962/TCA

**Address:** Cruck Cottage Church Road Upper Farringdon Alton Hampshire GU34 3EG

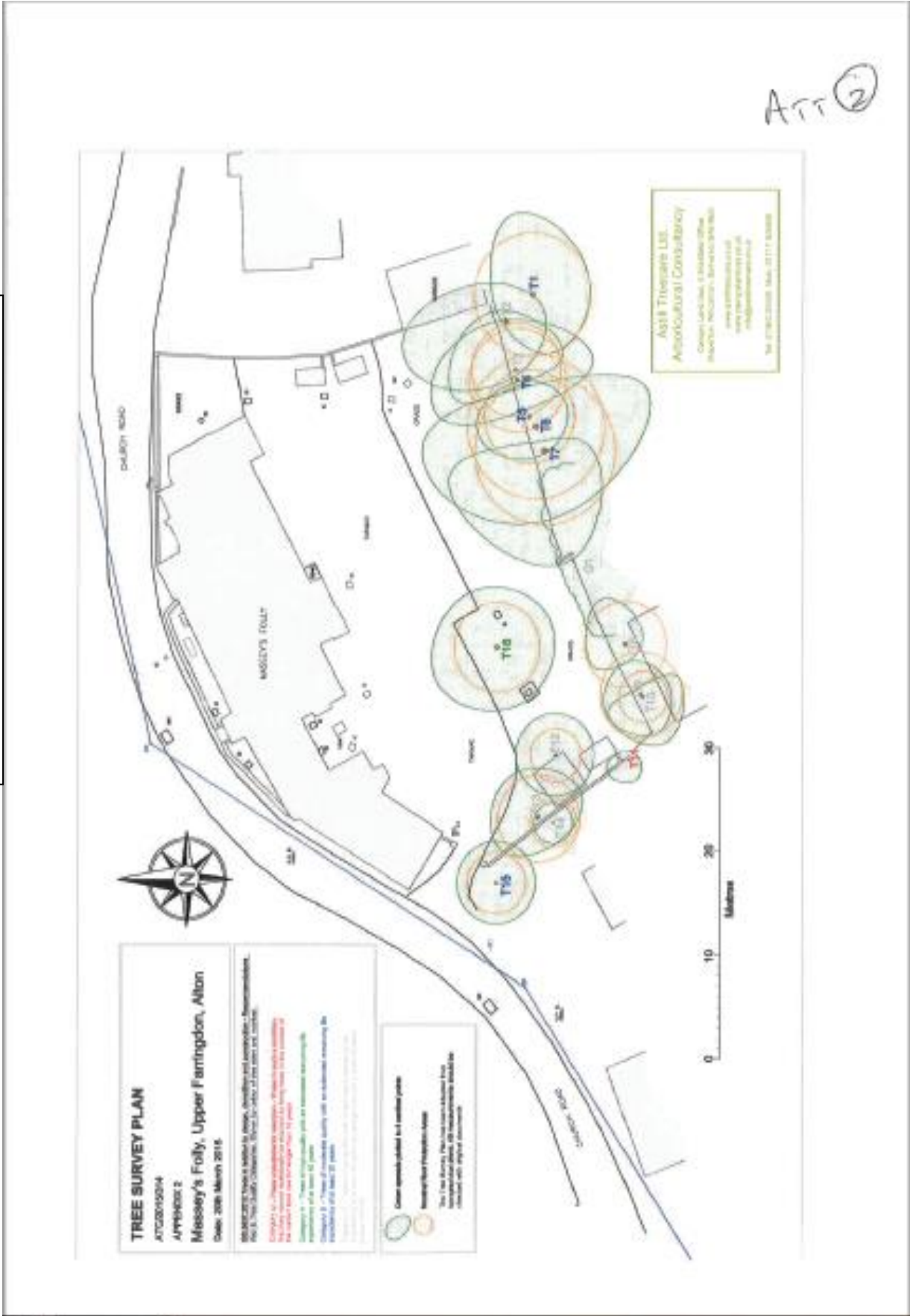
**Proposal:** Ash trees x 7 - fell

**Planning Officer:** Hannah Goldsmith

**Planning Officer's comments:** None made

**Closing Date (for comments):** 25<sup>th</sup> December 2017

SDNP/17/05962/TCA  
Location of the 7 Ash trees, from the documentation on the SDNP Planning system



SDNP/17/05962/TCA  
 Schedule describing the 7 Ash trees, from the documentation on the SDNP Planning system

Ref no	Species	Ht (m)	Stem Diam (mm)	Stem Form (m)	DBH (m)	Crown spread (m)	Crown base SL (m)	Life Stage	General observations: Structural and physiological condition	Measurement Recommendations (regardless of development proposal) *Subject to consent of landowner	Est. rest. Cont. (years)	Notes
(1)	(2)	(3)	(4)	(5)	(6)	(7)	(8)	(9)	(10)	(11)	(12)	(13)
1	Ash <i>Fraxinus excelsior</i>	21	500#	113	6.0	4 8 6 6	12 E	EM	<ul style="list-style-type: none"> <li>Off-site tree</li> <li>High crown with slight asymmetry to south-east due to lateral suppression for Tree 2</li> <li>Severed and dead by in crown</li> <li>Roostery - 4 nests</li> </ul>	-	20+	-
2	Ash <i>Fraxinus excelsior</i>	20	300 450#	133 6.5	4 5 4 5	6 10 N N	EM	<ul style="list-style-type: none"> <li>Off-site tree</li> <li>Bifurcates at 1.2 metres above ground level</li> <li>Subordinate stem supporting negligible live branch structure - Moribund stem</li> <li>Dominant stem with over-extended primary branch to north</li> <li>Some former lateral reduction of secondary branches to the north</li> <li>Severed and dead by on stem</li> </ul>	<ul style="list-style-type: none"> <li>Produce notional subordinate stem to 5 metres in height</li> <li>Remove over-extended primary branch to the north</li> </ul>	10+	-	C2
3	Ash <i>Fraxinus excelsior</i>	8.5	300# by	67 4.6	3 6 5 1.5	4 2.5 NE N	SM	<ul style="list-style-type: none"> <li>Off-site tree</li> <li>Irregular and weak crown form suppressed by Trees 2 &amp; 4</li> <li>Dense by throughout crown</li> <li>Low pendulous tips over site to the north</li> </ul>	-	10+	-	C2
4	Ash <i>Fraxinus excelsior</i>	21	420#	79 5	9 6 8 5	4.5 6 N N	EM	<ul style="list-style-type: none"> <li>Off-site tree</li> <li>Laterally suppressed from east and west by Trees 2 &amp; 5</li> <li>Dead/ severed by on lower stem</li> <li>Lowest primary branch recently reduced hard back over site</li> <li>Roostery - 3 nests</li> </ul>	<ul style="list-style-type: none"> <li>Remove lowest primary branch</li> <li>Crown lift pendulous tips over site to 6 metres above ground level</li> </ul>	20+	-	02/3
5	Ash <i>Fraxinus excelsior</i>	21	380#	67 4.6	5.5 3.3 4 4	1.8 15 NE	SM	<ul style="list-style-type: none"> <li>Off-site tree</li> <li>Drawn up stem with high crown</li> <li>Low primary branch at 1.8 metres to the north-east historically truncated with no remaining branch structure</li> <li>Roostery - 3 nests</li> </ul>	<ul style="list-style-type: none"> <li>Remove truncated low primary branch to north-east</li> </ul>	20+	-	02/3
6	Ash <i>Fraxinus excelsior</i>	20	500#	154 7.0	12 14 12 9	8 N N	EM	<ul style="list-style-type: none"> <li>Off-site tree</li> <li>Dominant tree (spread) in group</li> <li>Laterally suppressed from east with crown asymmetry to the north-west and south</li> <li>Roostery - 1 nest</li> </ul>	<ul style="list-style-type: none"> <li>Selectively reduce lateral branches to the north by 3.5 metres</li> <li>Selectively reduce lateral branches to the west by 2.5 metres</li> <li>Crown lift 6 metres above ground level over site</li> </ul>	20+	-	02/3
7	Ash <i>Fraxinus excelsior</i>	13	600 @1.0 #	163 7.2	10 1 4 11	4 5 NW NW	EM	<ul style="list-style-type: none"> <li>Off-site tree</li> <li>Bolt divides into 3 primary stems at 1.5 metres above ground level (diameters 150x25x280)</li> <li>Smallest stem over site is dead</li> <li>Other 2 stems of irregular form and heavily suppressed to north and west by Tree 6</li> <li>Dead severed by on stem</li> </ul>	-	20+	-	B1